

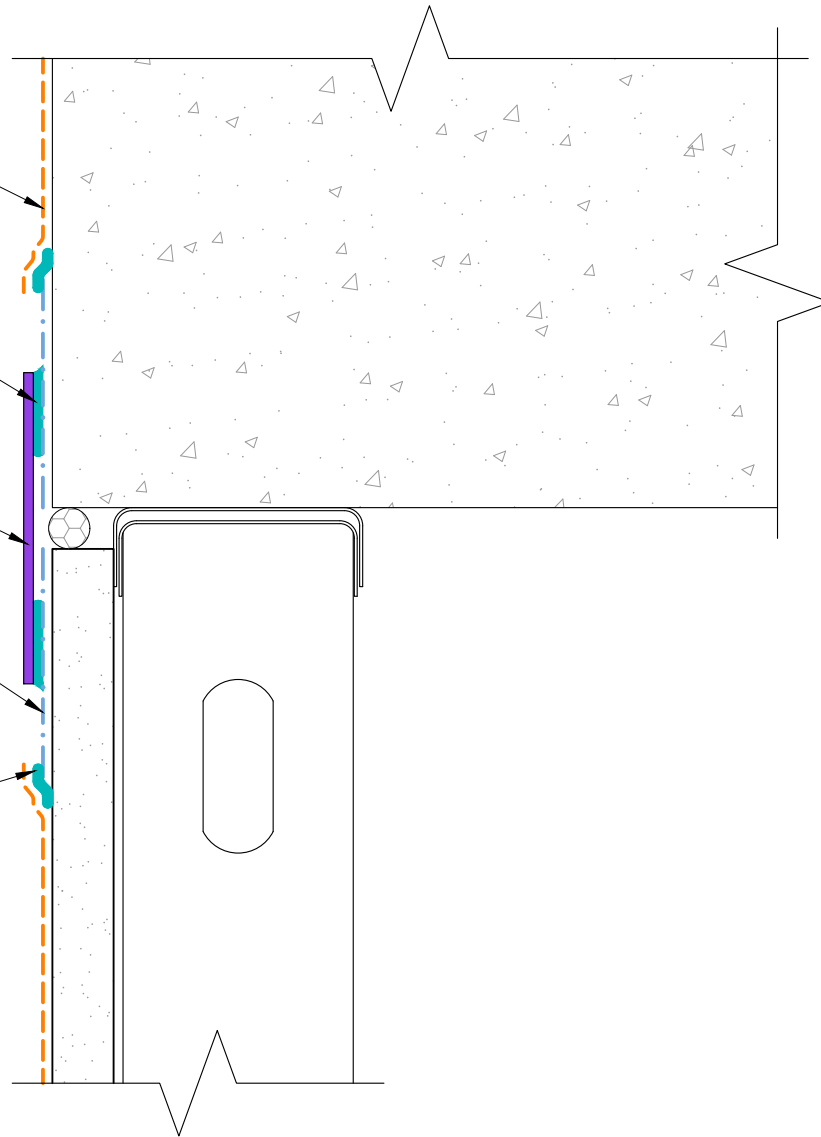
EXOAIR 120

SPECTREM 1
MINIMUM 1"

PROGLAZE ETA

EXOAIR 110AT OR 110

DYMONIC 100



NOTES: BUILDING FACADE AND TOP OF FLOOR SLAB NOT SHOWN FOR CLARITY

EXOAIR PRIMER MUST BE USED WITH EXOAIR 110

The architecture, engineering, and design of the project using the Tremco products are the responsibility of the project's design professional. All products and systems must comply with local building codes and standards. This detail is for general information and guidance only and Tremco specifically disclaims any liability for the use of this detail. The project design professional determines, in its sole discretion, whether this detail or a functionally equivalent detail is best suited for the project. This detail is subject to change without notice. Contact Tremco to ensure you have the most recent version.

ExoAir 120



Tremco Technical Support: 866-209-2404

Detail: Impermeable Fluid - Deflection Joint - Proglaze ETA

Drawn by: KAB

Checked by: CB

Scale: NTS

Date: 4/25/2023

File Name:

AVB-SI-F-DJ-02



Construction Products Group

tremcocpg.com