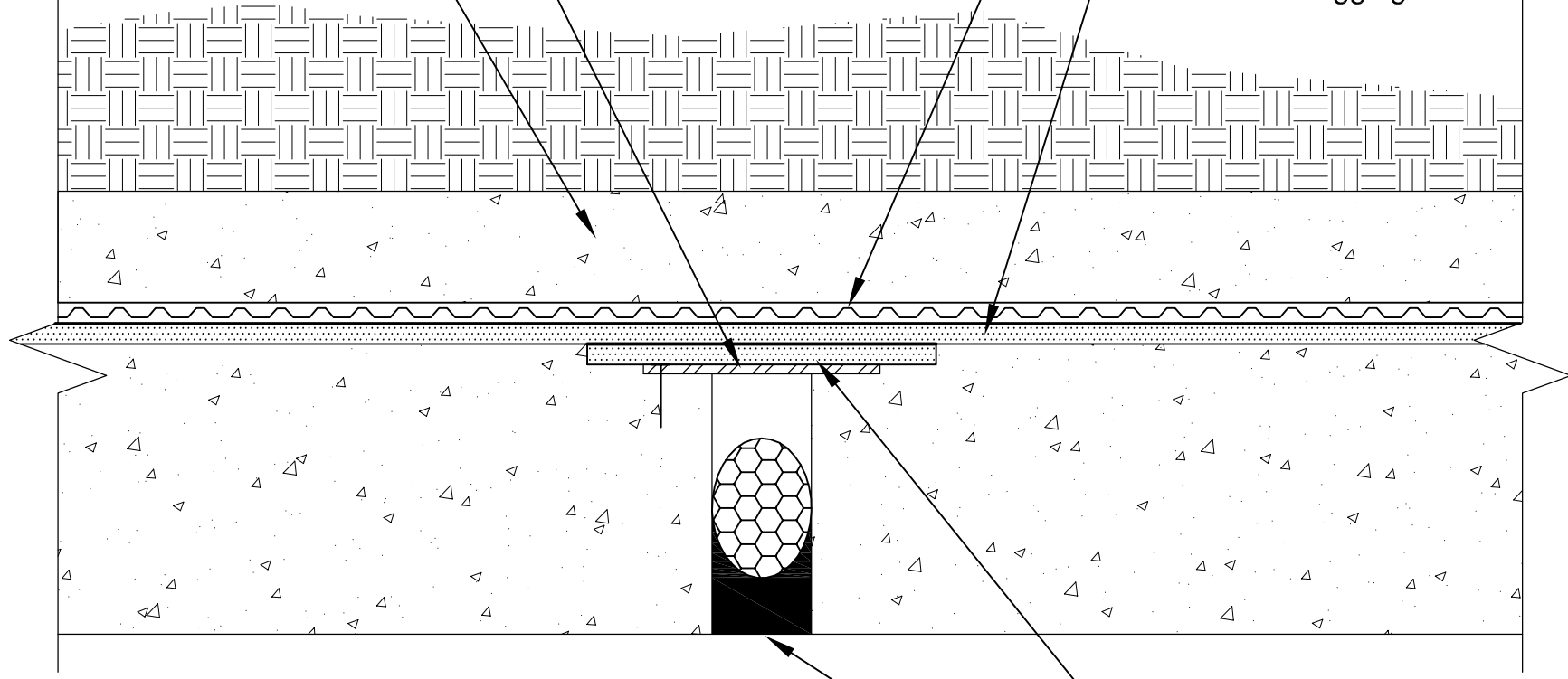


Steel plate centered over joint

Shotcrete or wood lagging wall

TREMDrain 1000 (applied at non-submerged conditions only)

Paraseal GM/LG 60 Mil with HDPE side against shotcrete or wood lagging wall



Paraseal GM/LG 60 Mil, 24" wide target sheet

Dymonic 100 over backer rod

Note: Paraseal products require a minimum 24 psf compaction/confinement to be effective.

This detail is intended for conceptual purposes only. Detail must be reviewed by a project/design professional. See www.tremcosealants.com for the most up-to-date product information.

Rev	Date	Description	By
-	-	-	-