

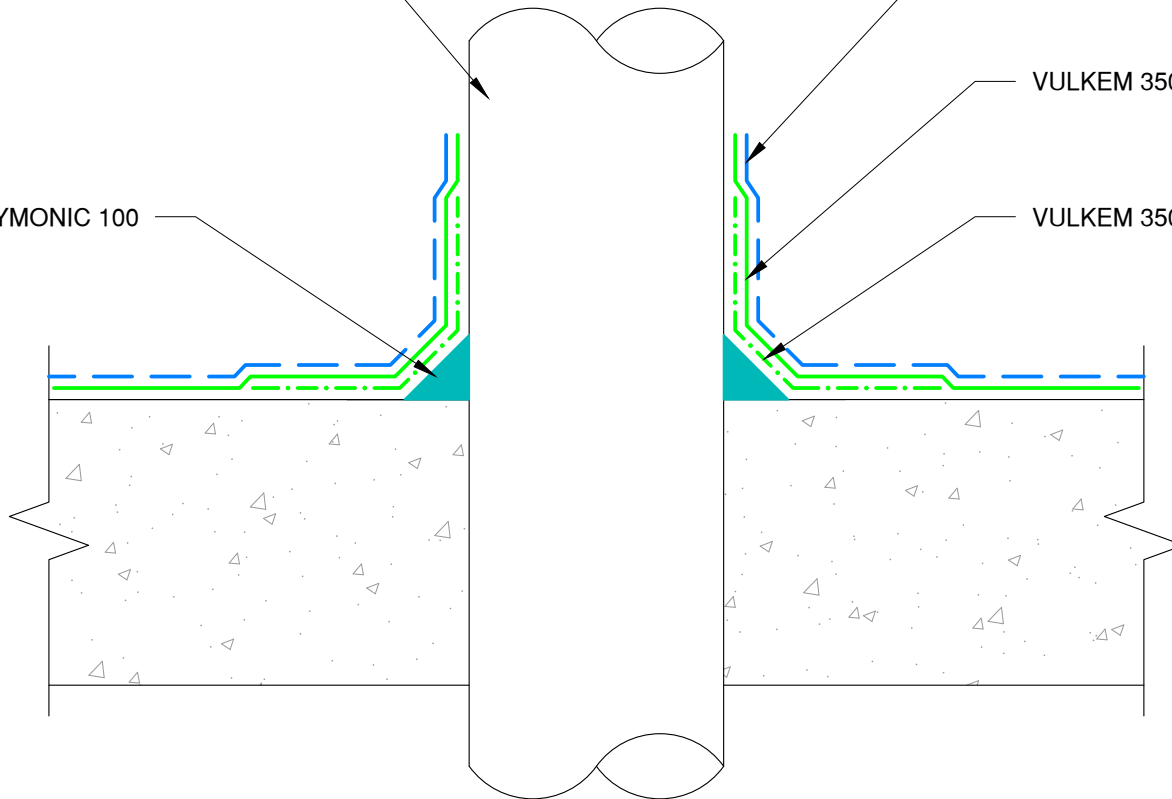
PRIME WITH TREMPRIME
NON-POROUS PRIMER

DYMONIC 100

VULKEM 951NF TOP COAT
W/AGGREGATE

VULKEM 350FC BASE COAT

VULKEM 350FC DETAIL COAT



NOTE: VULKEM 950NF MAY BE USED AS A
TOPCOAT IN AREAS WITH NO U.V.

The architecture, engineering, and design of the project using the Tremco products are the responsibility of the project's design professional. All products and systems must comply with local building codes and standards. This detail is for general information and guidance only and Tremco specifically disclaims any liability for the use of this detail. The project design professional determines, in its sole discretion, whether this detail or a functionally equivalent detail is best suited for the project. This detail is subject to change without notice. Contact Tremco to ensure you have the most recent version.

Vulkem 350FC Pedestrian Coating



Tremco Technical Support: 866-209-2404

Detail: Treatment of Metal Penetration in Vulkem 350FC Pedestrian System

Drawn by: KAB

Checked by: EL

Scale: NTS

Date: 1/17/2023

File Name:

350FC-P-P-02



Construction Products Group

www.tremcocpg.com