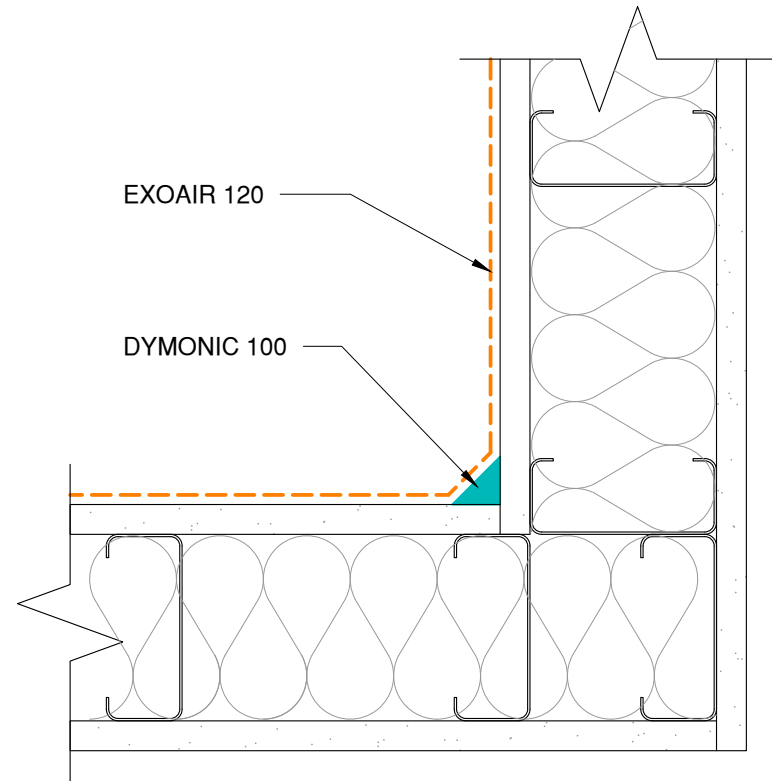


EXOAIR 120

EXOAIR 130 OR 230 WITH
TREMCO 2011 MESH FULLY
EMBEDDED



EXOAIR 120

DYMONIC 100

The architecture, engineering, and design of the project using the Tremco products are the responsibility of the project's design professional. All products and systems must comply with local building codes and standards. This detail is for general information and guidance only and Tremco specifically disclaims any liability for the use of this detail. The project design professional determines, in its sole discretion, whether this detail or a functionally equivalent detail is best suited for the project. This detail is subject to change without notice. Contact Tremco to ensure you have the most recent version.

ExoAir 120



Tremco Technical Support: 866-209-2404

Detail: Impermeable Fluid - Inside/Outside Corners - Fluid

Drawn by: KAB

Checked by: CB

Scale: NTS

Date: 4/1/2022

File Name:

AVB-SI-F-C-01



Construction Products Group

tremcocpg.com