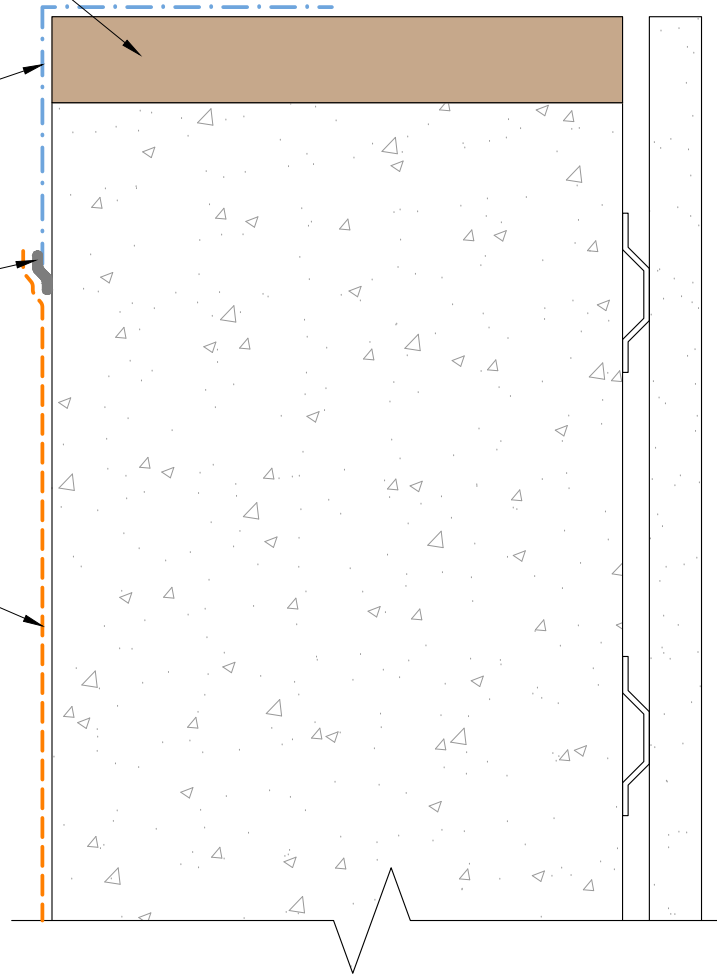


ENGINEERED FRAMING SYSTEM  
BY PREBUCK LLC  
OR FUNCTIONAL EQUIVALENT

EXOAIR 110AT

EXOAIR DUALFLASH

EXOAIR 130/230



NOTES: WINDOW AND BUILDING FACADE NOT SHOWN FOR CLARITY

*This detail is for general informational purposes only. The project design professional determines, in its sole discretion, whether this detail or a functionally equivalent detail is best suited for the project with respect to any architecture, engineering, and design requirements, including any local building code requirements. If this document is not reviewed and the product is not approved for use by a licensed design professional, the customer agrees that the detail may contain substantive flaws requiring correction, and hereby releases Tremco CPG Inc. from any and all liability related to the design and installation of the product. This detail is subject to change without notice. Contact Tremco to ensure you have the most recent version.*

**ExoAir DualFlash**



Tremco Technical Support: 866-209-2404

Detail: Jamb - ExoAir 110/110AT Option

Drawn by: HDE

Checked by: CB

Scale: NTS

Revision #: 01

Revised by: KAB

Date: 11/19/2024

File Name:

DF-WS-02



Construction Products Group

[www.tremcocpg.com](http://www.tremcocpg.com)