

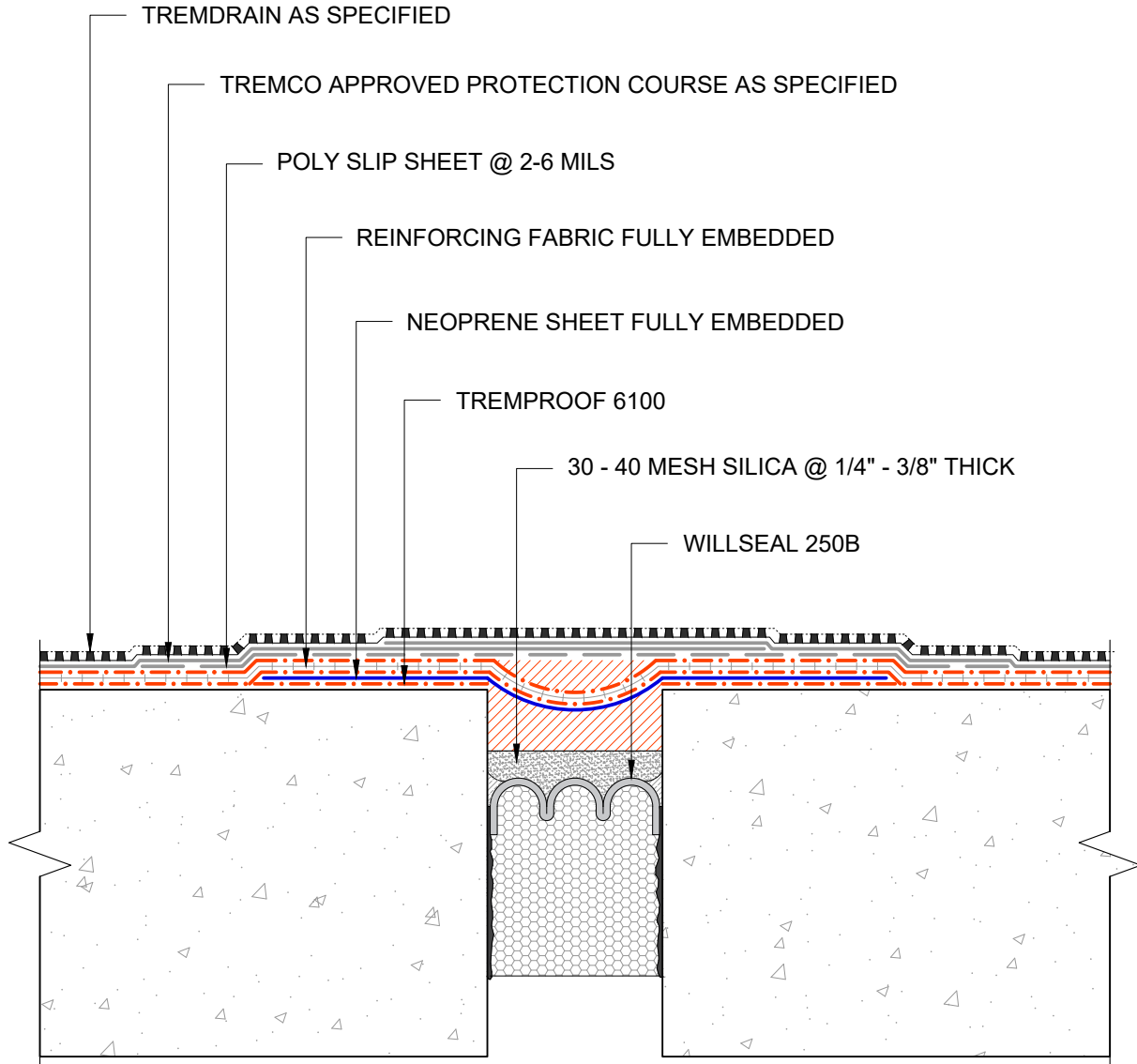
**Procedure:**

Gaps 1/2" to 1" wide. Willseal 250B installed 1/2" to 3/4" below surface grade.  
Install 30 to 40 mesh fine aggregate at 1/4" thick over the Willseal 250B.  
Install 6100 HRA over the gap and place neoprene sheet dead flat.  
Install 6100 and the entire reinforced system over the neoprene sheet dead flat.

Gaps greater than 1". Install Willseal at a minimum estimate of 1" to 1.5" below surface grade.  
Install 30 to 40 mesh aggregate at 1/4" to 3/8" thick over the Willseal 250B.  
Install 6100 over gap with the neoprene sheet depressed as a loop at 50% depth to gap width.  
Install 6100 and the entire reinforced system over the neoprene sheet dead flat.

Note: As a rule for gaps greater than 1", the neoprene sheet should loop into the gap at 50% of the joint width. Estimate Willseal depth including the aggregate thickness in your calculation of 50% neoprene sheet loop depth.

Example: A 2" wide gap would be a 1" neoprene loop depth. The Willseal will be placed at 1.25" minimum below surface grade. Aggregate at 1/4" thick minimum. That allows the 6100 and neoprene sheet to be placed or looped at 50% depth of the gap width.



*This detail is for general informational purposes, only. The project design professional determines, in its sole discretion, whether this detail or a functionally equivalent detail is best suited for the project with respect to any architecture, engineering, and design requirements, including any local building code requirements. If this document is not reviewed and the product is not approved for use by a licensed design professional, the customer agrees that the detail may contain substantive flaws requiring correction, and hereby releases Tremco CPG Inc. from any and all liability related to the design and installation of the product. This detail is subject to change without notice. Contact Tremco to ensure you have the most recent version.*

**NOTE: TREMPRIME QD OR TREMCO APPROVED PRIMER MUST BE APPLIED BEFORE THE APPLICATION OF TREMPROOF 6100**

**TREMPROOF 6100**



Tremco Technical Support: 866-209-2404

Detail: TREMPROOF 6100 with Willseal 250B at Floor to Floor Expansion Joint

Drawn by: HDE

Checked by: GM/WH/AM

Scale: NTS

Revision #: 1

Revised by: HDE

Date: 6/28/2024

File Name:

H-EJ-FF-05



Construction Products Group

www.tremcocpg.com